

Winnowing Plant

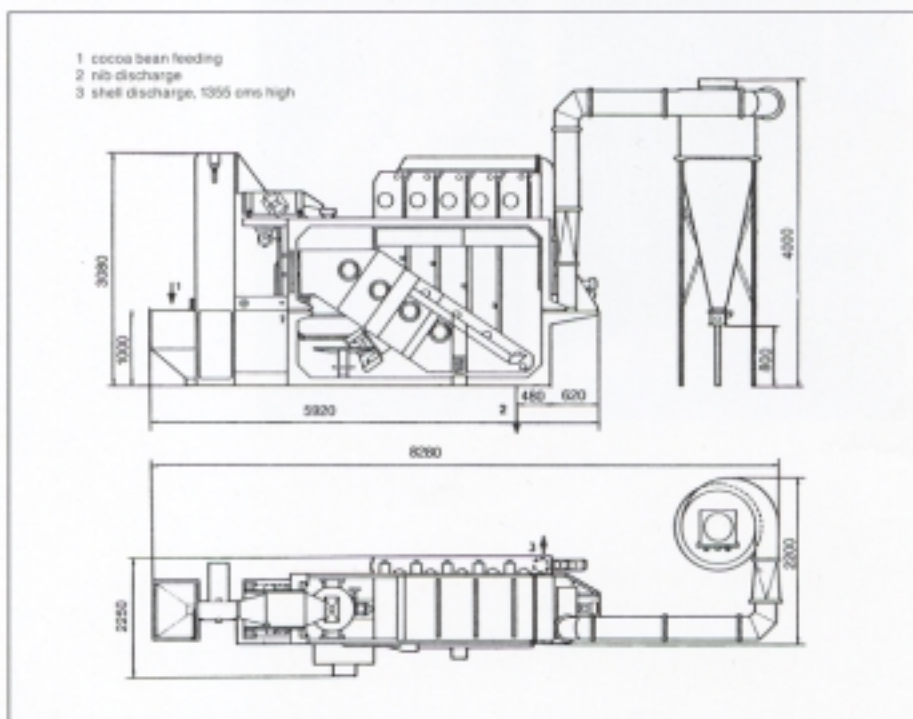
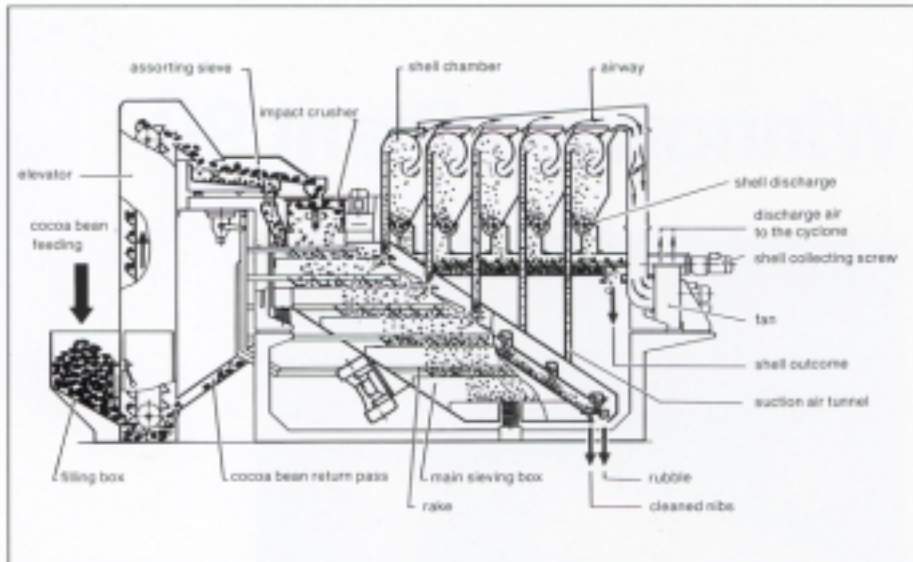
90

Application

Crushing and cleaning of roasted and dried cocoa beans

Construal Features

- bean filling into feeding box with gate valve for throughput regulation
- belt conveyor to feed assorting sieve
- assorting sieve with wire rod insertion, self-cleaning, driven by 2 external vibrators
- funnel-shaped crusher with infinitely variable speed to adopt the breaking force to the individual material that has to be roasted
- step screen with 5 different mesh sizes from coarse to fine, driven by 2 external vibrators
- screening rake for the distribution of the material and for cleaning
- sucking off of the shells at the sieve ends through rising sifters and separation of the air from the shells in the expansion chambers, discharge via conveyor screws, shell channels to the collecting screw
- radial flow fan with cyclone for the sucking off process and for the separation of the shells
- sequence control for the drives in order to prevent obstructing in case of motor failure



Technical Data

Capacity (cocoa bean feeding)	max. 1600 kg/h
Connected load (three phase current 50 Hz, cos phi 0,88)	10 kW
External dimensions with separator (length x width x height)	8280 x 2650 x 4000 mm
Weight with separator net gross	2650 kg 5630 kg
Required space (erection and operations area) with separator	3750 x 9500 mm
Required freight space	39,0 m ³